

# Instructions for the installation and use of program **OMNICARD** (rel.5.2)

---

18/04/2016





# Instructions for the installation and use of program OMNICARD (rel.5.2)

## Summary

Installation/updating program OMNICARD 5.2	3
How to start program OMNICARD 5.2	11
How to use program OMNICARD 5.2	13
Writing and reading of parameters	16
Reading of parameters	18
Writing of parameters	20



## Instructions for the installation and use of program OMNICARD (rel.5.2)

### INSTALLATION/UPDATING PROGRAM OMNICARD 5.2

ATTENTION: the following operations shall be made by means of a PC based on Windows XP or advanced.

1. Connect to web site: <http://serverlinx.it/>

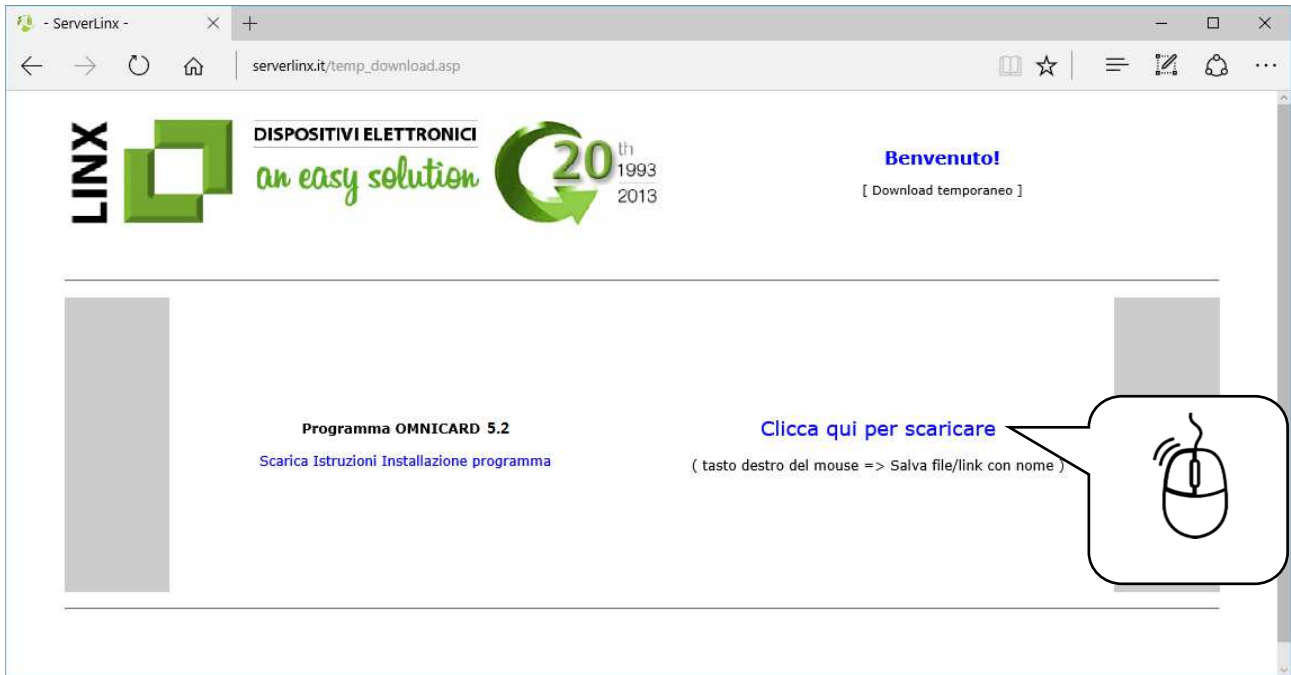


2. Click on icon Program OMNICARD 5.2, or advanced, with the left mouse button

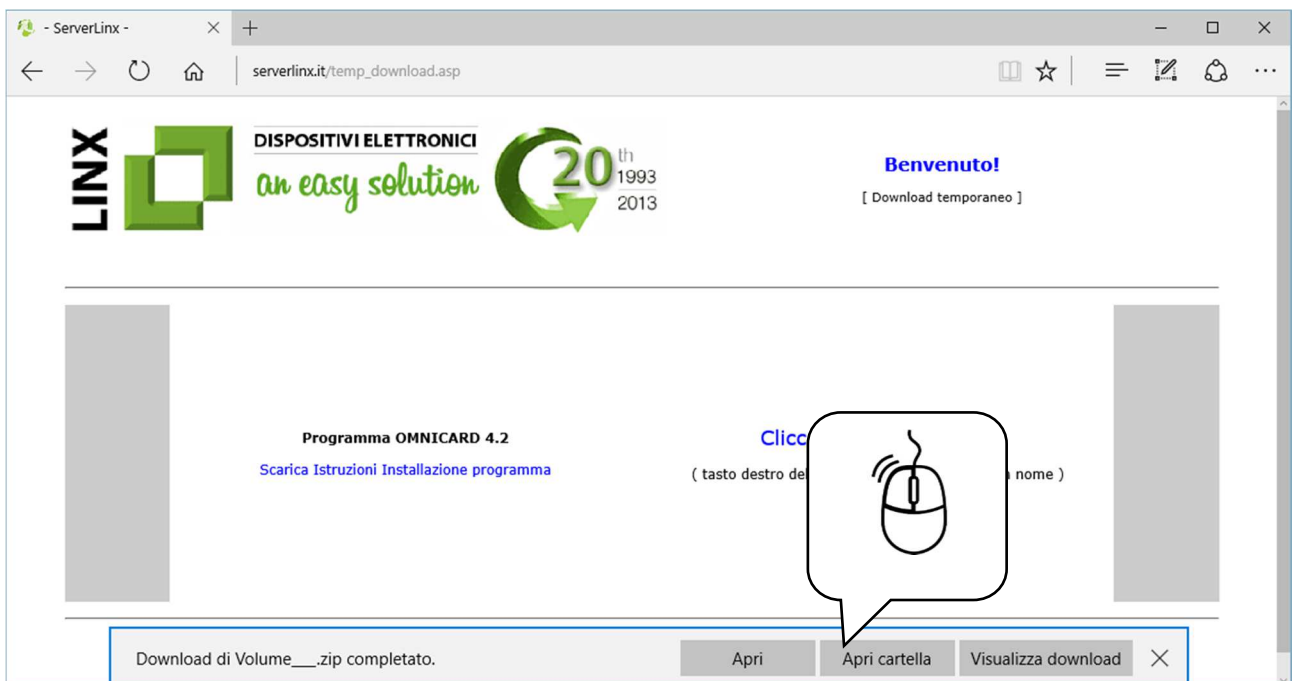


## Instructions for the installation and use of program OMNICARD (rel.5.2)

3. Click on link “Click here for downloading” with the left mouse button to start downloading (or click with the right mouse button to save file with name in the chosen destination).



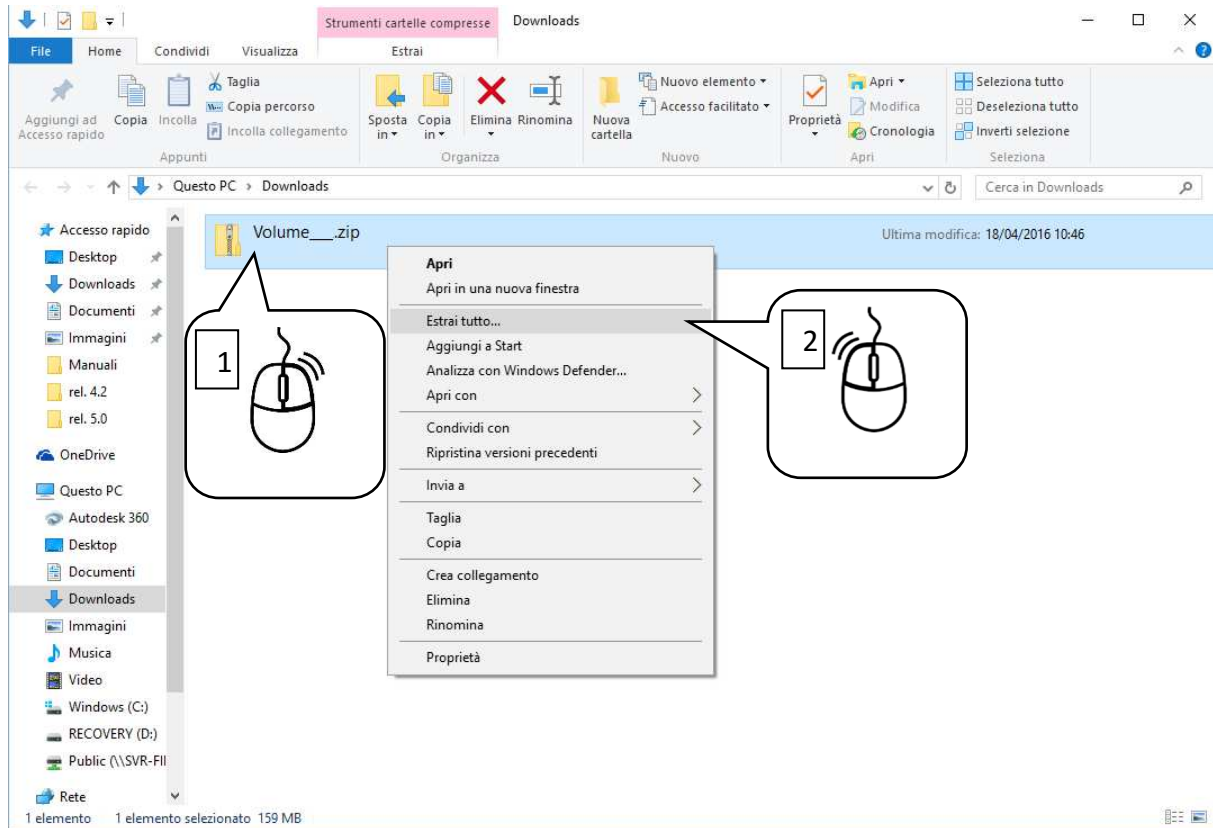
4. As soon as downloading ends, open the folder of saved file.





## Instructions for the installation and use of program OMNICARD (rel.5.2)

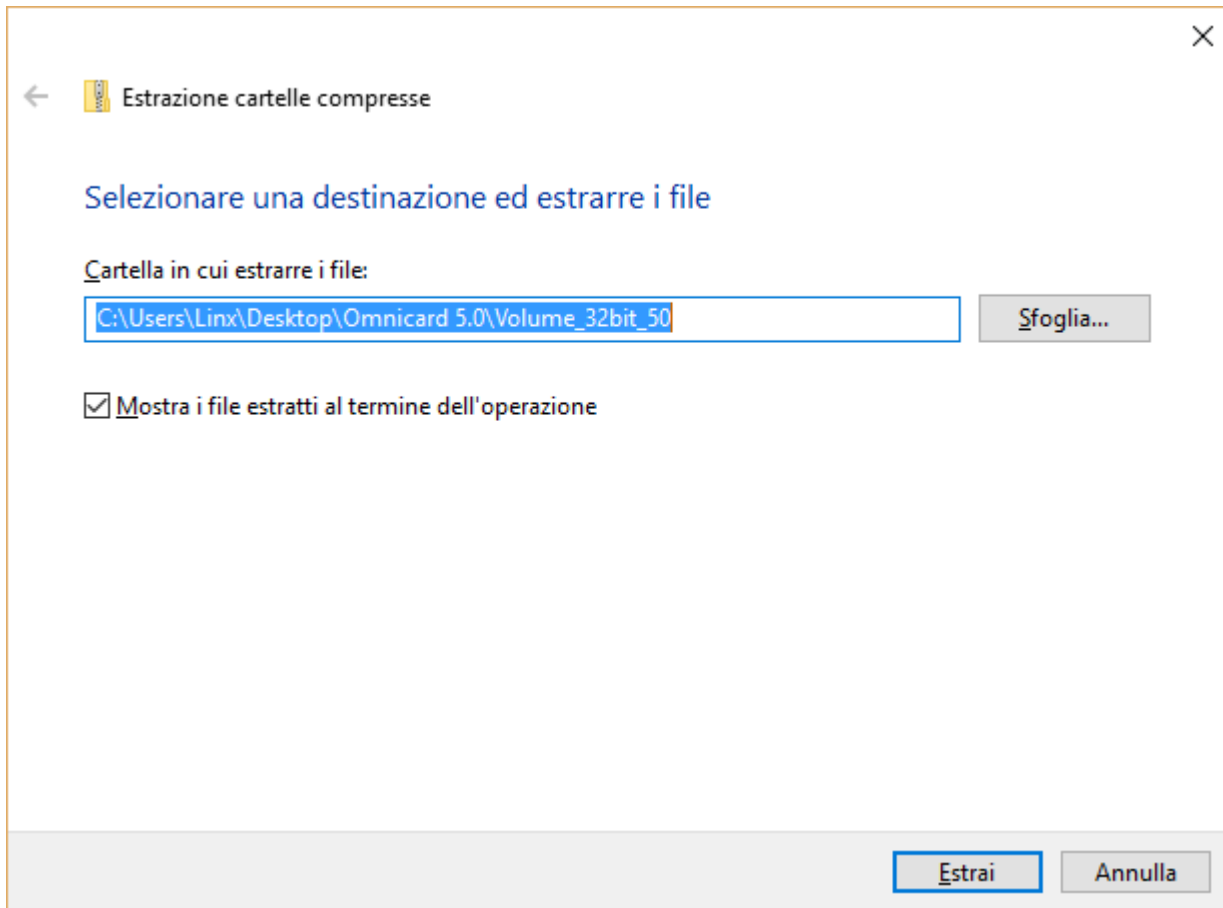
5. After selecting **Volume\_32bit\_50.zip** click on the right mouse button and select “**Extract all**” from the dropdown menu





## Instructions for the installation and use of program OMNICARD (rel.5.2)

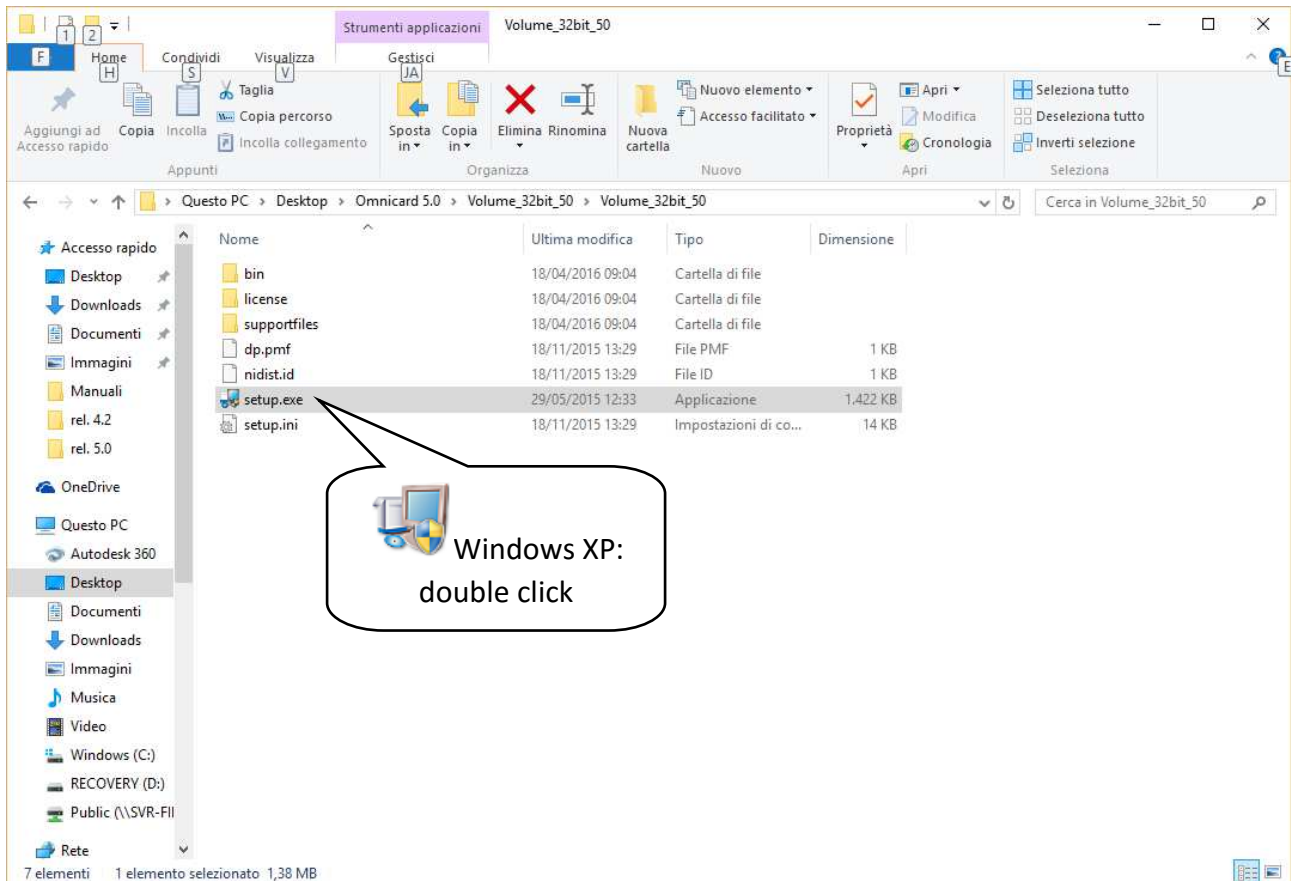
1. Extract the content of zipped file:





## Instructions for the installation and use of program OMNICARD (rel.5.2)

2. Open file **Volume\_32bit\_50** created and execute file Setup.exe:

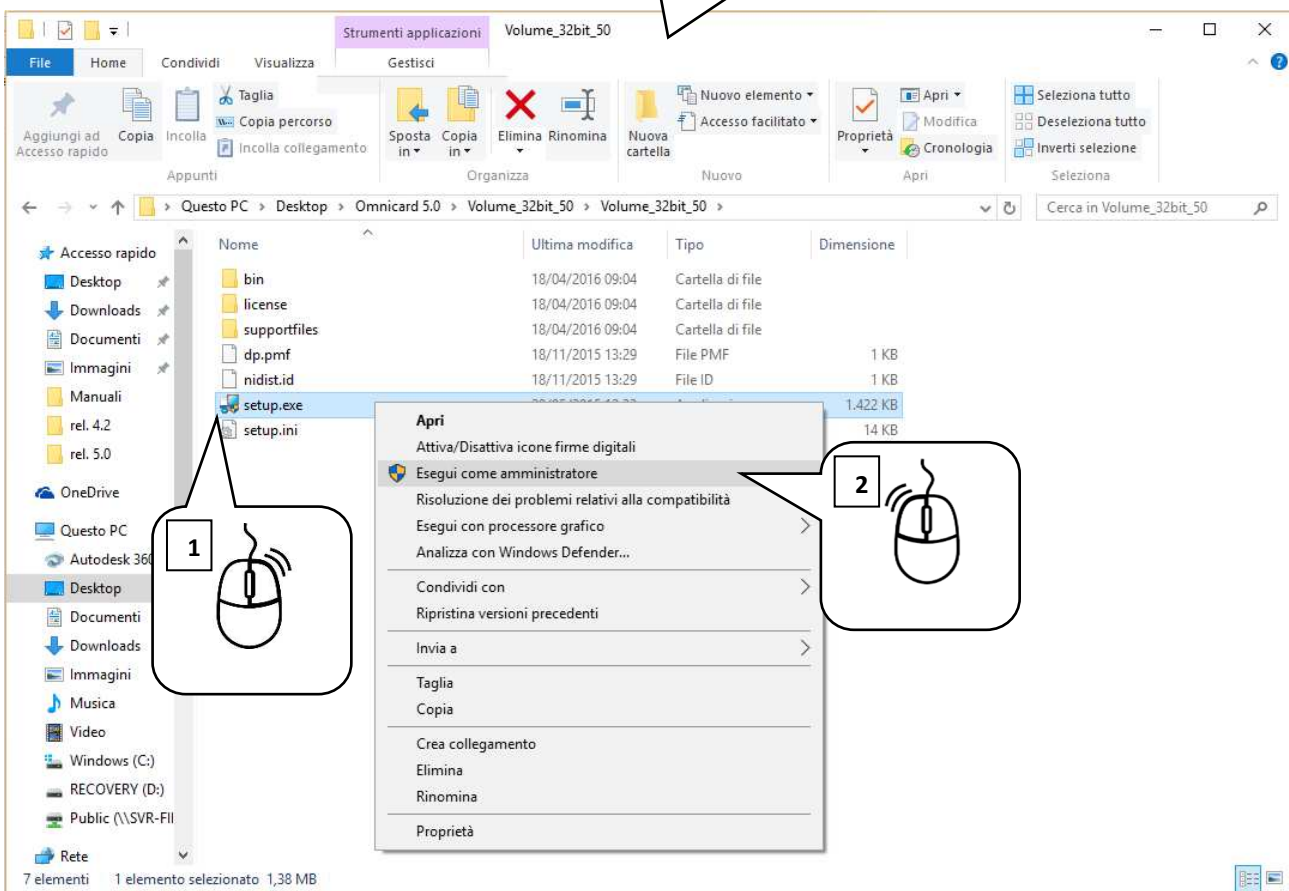




# Instructions for the installation and use of program OMNICARD (rel.5.2)

Only for Windows 7 or advanced: click with the right mouse button and select **Execute as Administrator**

Windows 7 or advanced:  
Click with the right  
mouse button and select  
**Execute as  
Administrator**

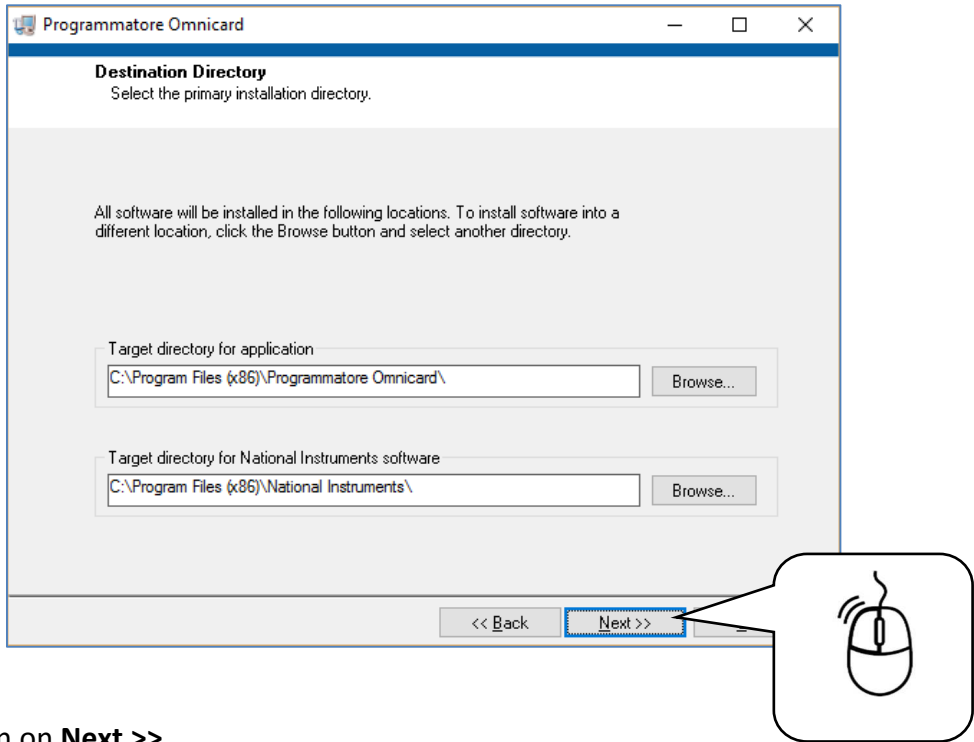




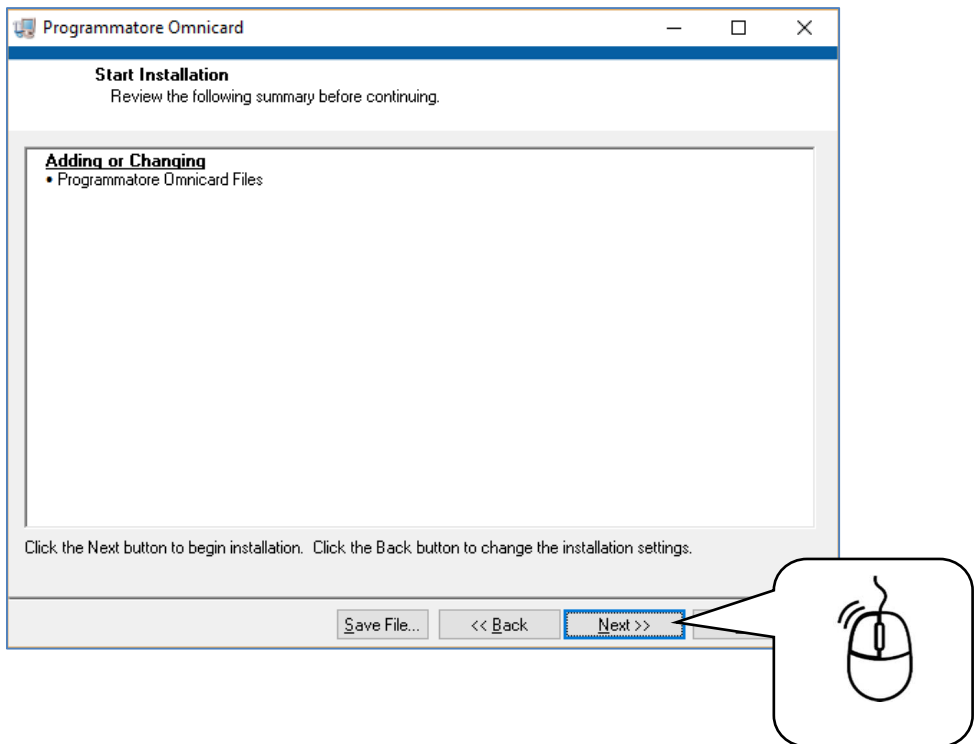


# Instructions for the installation and use of program OMNICARD (rel.5.2)

1. At program's Setup opening, select **Next >>**



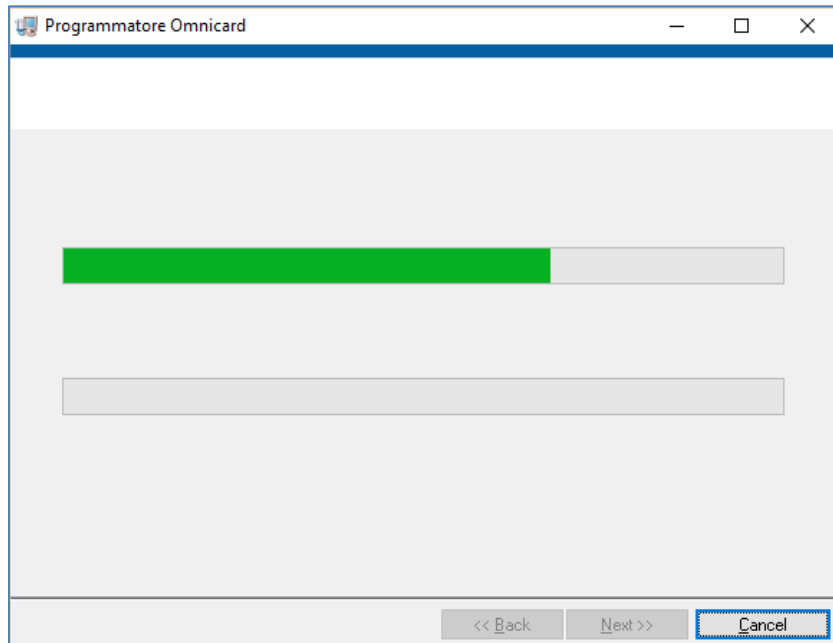
1. Click again on **Next >>**



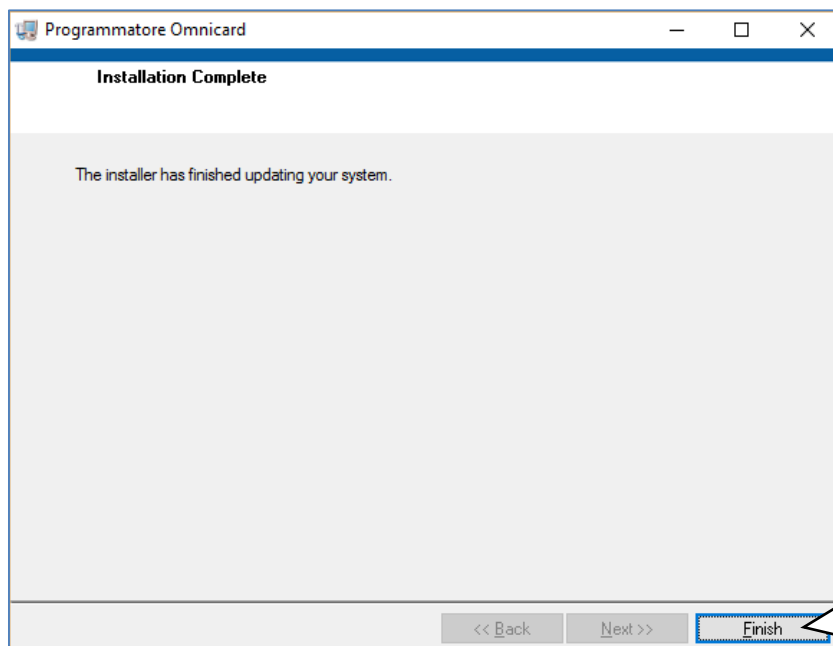


# Instructions for the installation and use of program OMNICARD (rel.5.2)

1. Wait until operation ends



1. As soon as installation ends, click on **Finish**



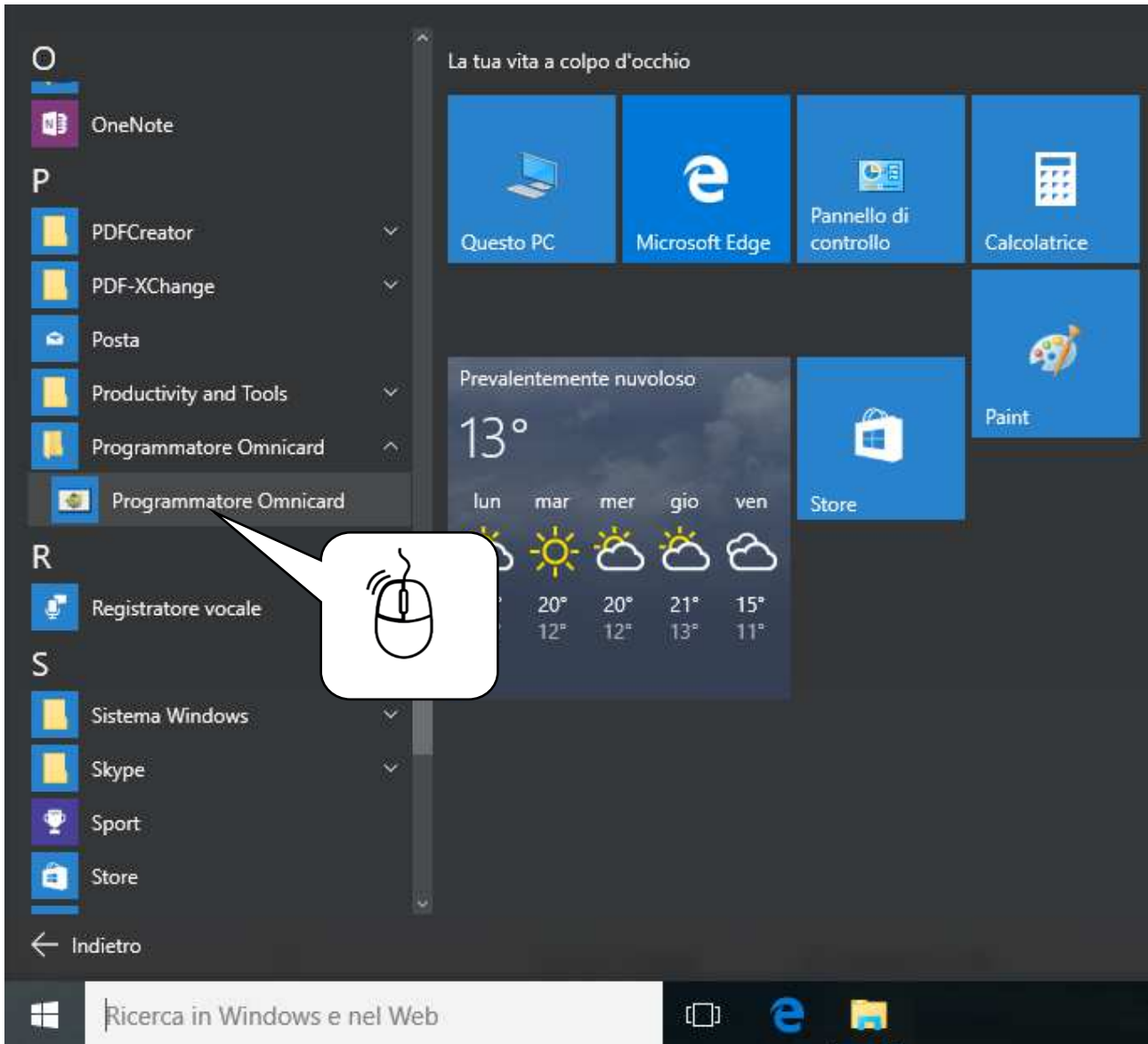
3. Click on **Restart** to restart the PC



## Instructions for the installation and use of program OMNICARD (rel.5.2)

### 4. HOW TO START PROGRAM OMNICARD 5.2

1. Start program (ex. on Windows 10)



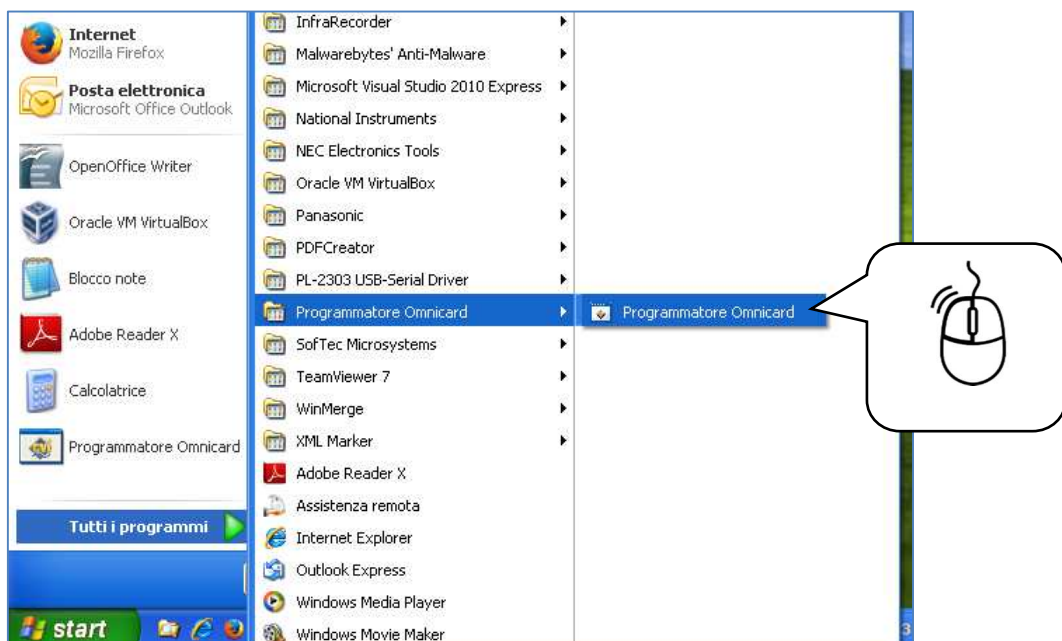


## Instructions for the installation and use of program OMNICARD (rel.5.2)

2. Start program (ex. on Windows 8)



3. Start program (ex. on Windows XP/ Windows 7)



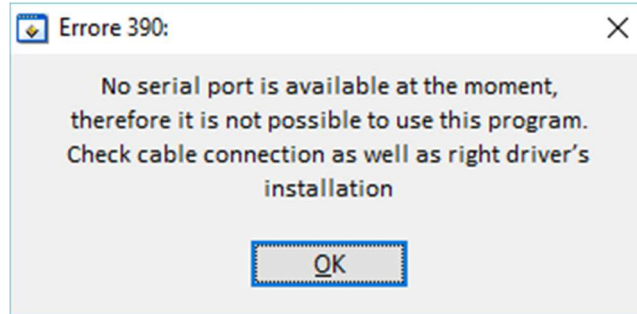


## Instructions for the installation and use of program OMNICARD (rel.5.2)

### HOW TO USE PROGRAM OMNICARD 5.2

ATTENTION: the following operations shall be made by means of a PC based on Windows XP or advanced.

1. If not already done, install program OMNICARD (see previous section "Instructions for installing/updating program OMNICARD 5.2")
2. Please make sure you have access to Internet in order to allow drivers automatic installation
3. Connect the specific adapter cable USB/RS232 to PC
4. Wait until the Interface inside the cable has automatically installed/updated drivers (if not found, proceed with manual installation by using drivers inside file " FTDI USB-COM drivers ")
5. Execute application OMNICARD ( from Desktop or menu programs/OMNICARD)
6. From the first starting and/or without adapter cable USB/RS232 connection to PC, the following message will appear:

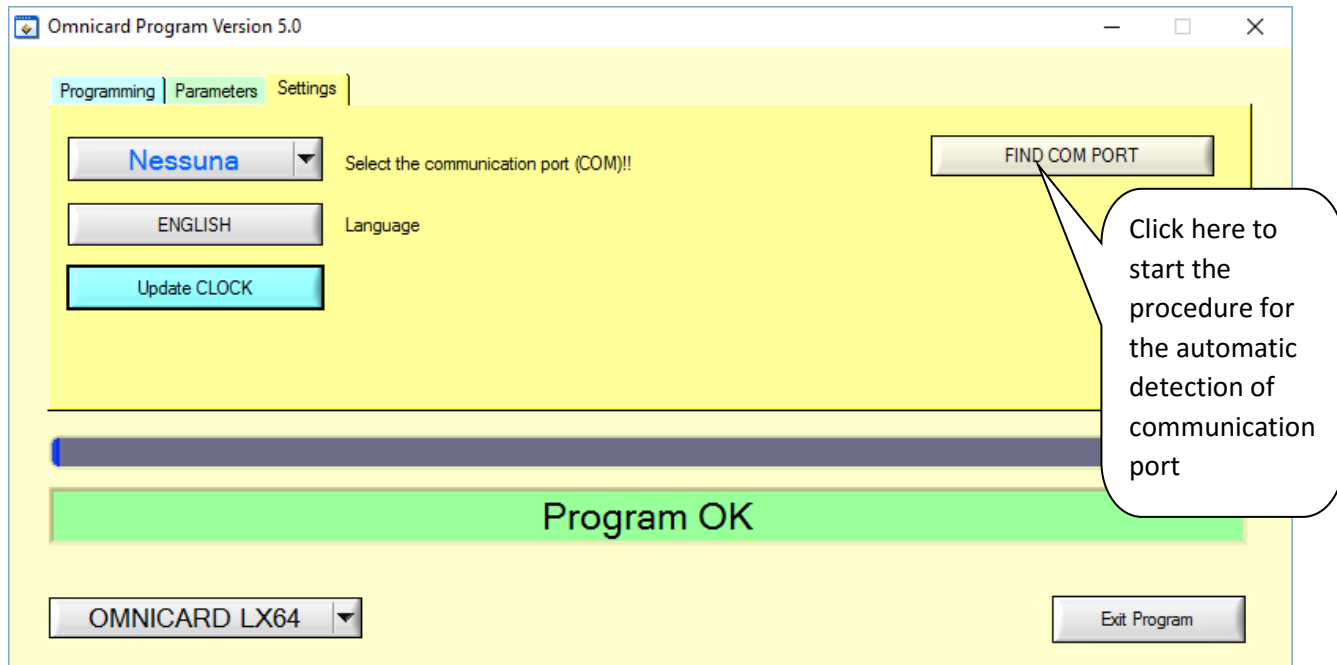


7. Click on OK



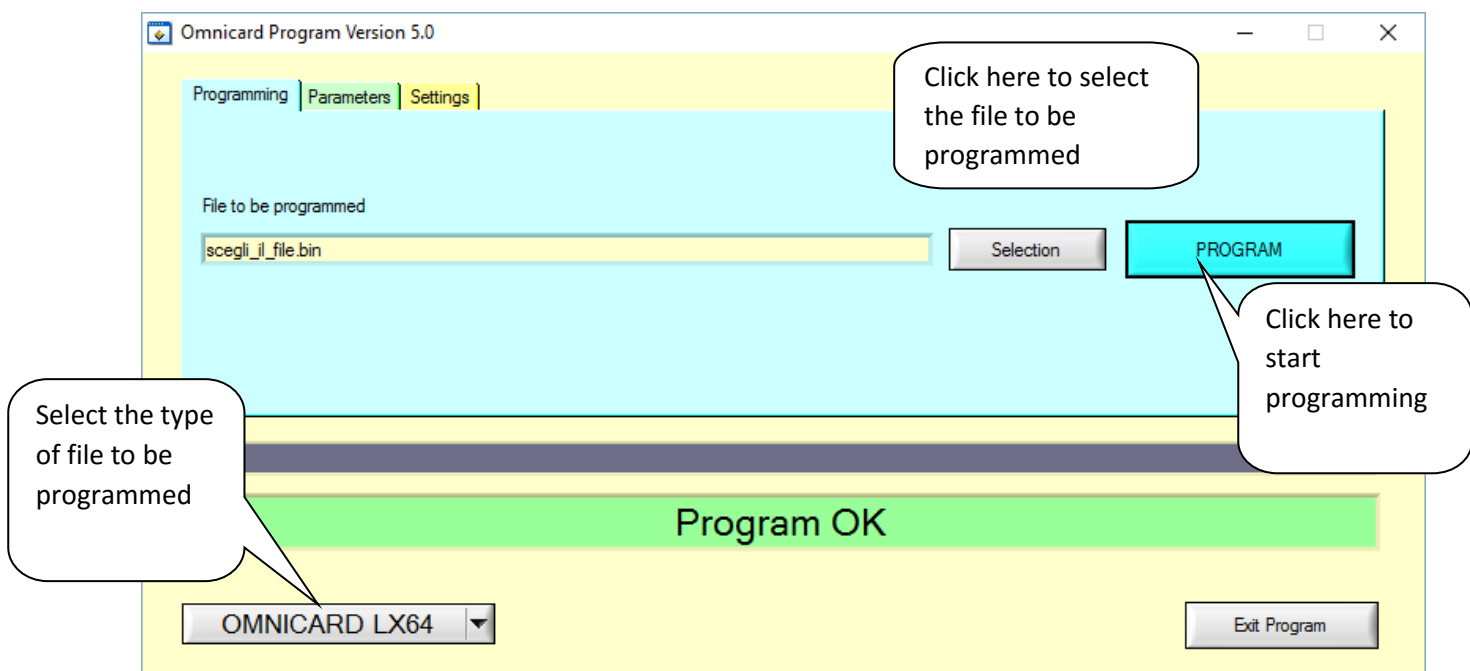
## Instructions for the installation and use of program OMNICARD (rel.5.2)

8. You will see page “Settings”



9. Click on “ FIND COM PORT “ and follow the instructions given by the program

10. Select file “Programming”



11. Set up the correct type of file from the dropdown menu below



## Instructions for the installation and use of program OMNICARD (rel.5.2)

12. Click on “Selection” to choose the file containing the programming firmware
13. Make sure that the board is not powered
14. Click on “ Program “
15. Power up the board.
16. Firmware downloading procedure will start and end automatically. At the end you will get a message indicating if the board has been programmed correctly or if any errors were found during programming.
  
17. READING AND WRITING OF PARAMETERS (with new version 5.2 program OMNICARD) see the following pages.



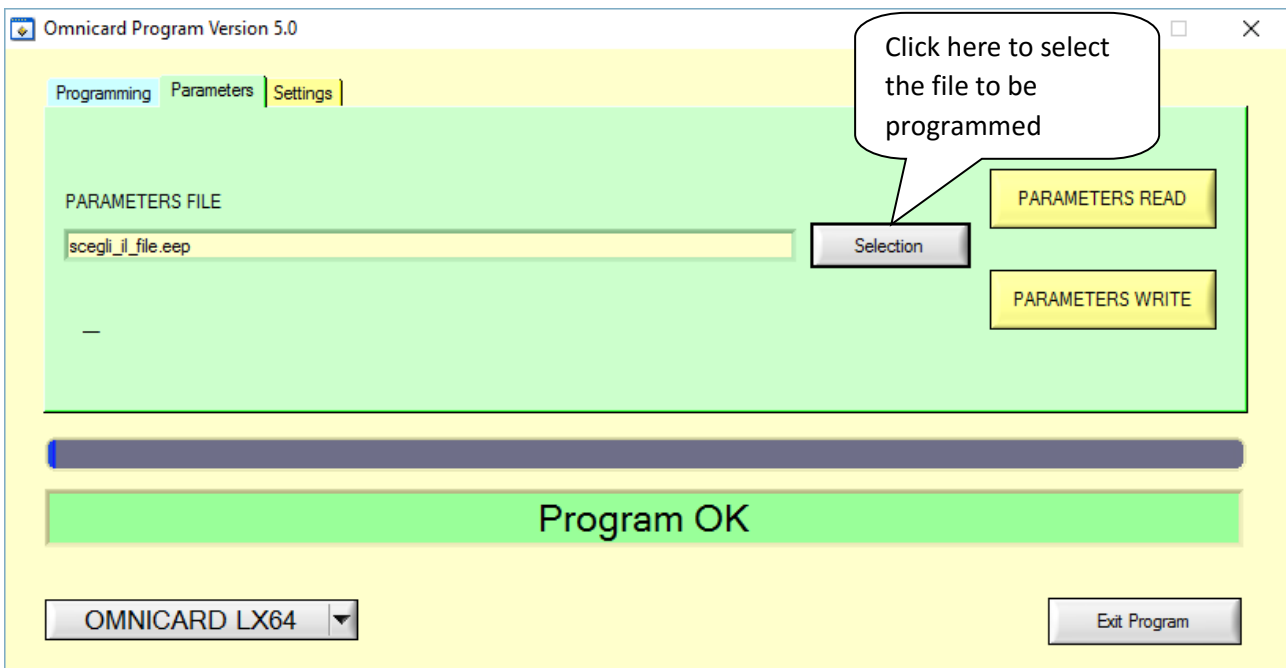
# Instructions for the installation and use of program OMNICARD (rel.5.2)

## READING AND WRITING OF PARAMETERS

### - **PARAMETERS FILES SELECTION**

With the new version 5.2 of programmer OMNICARD, you now have the chance to read and write the parameters of selected boards.

1. Press “Parameters” to select the file to be programmed.

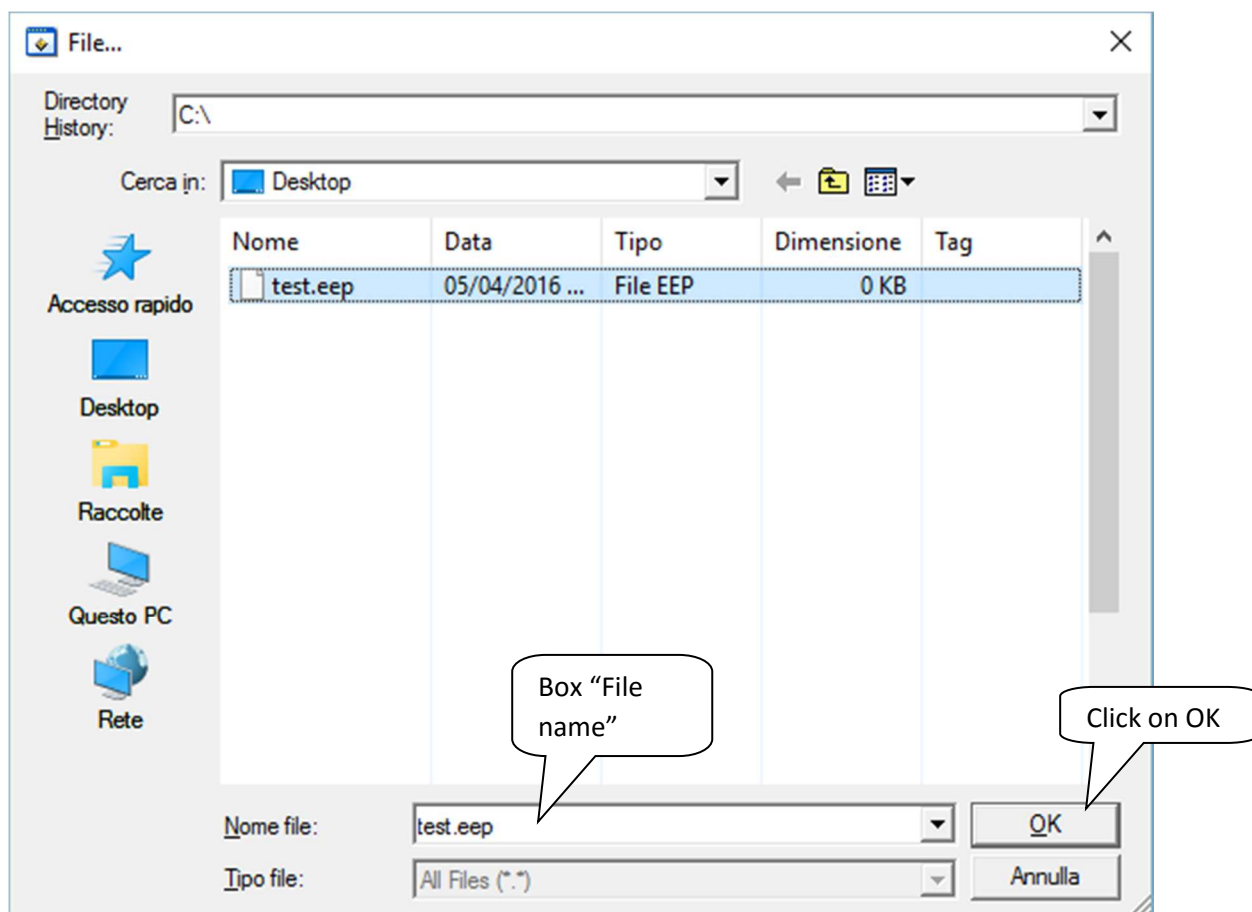






## Instructions for the installation and use of program OMNICARD (rel.5.2)

2. Select the existing file with extension type EEP or create a new file. To create a new file, click on “Selection” and write in the box “File Name” the name of the new file; said file will be saved directly into the directory previously chosen. (P.S.: File will be created after parameters reading). Click on “OK”.

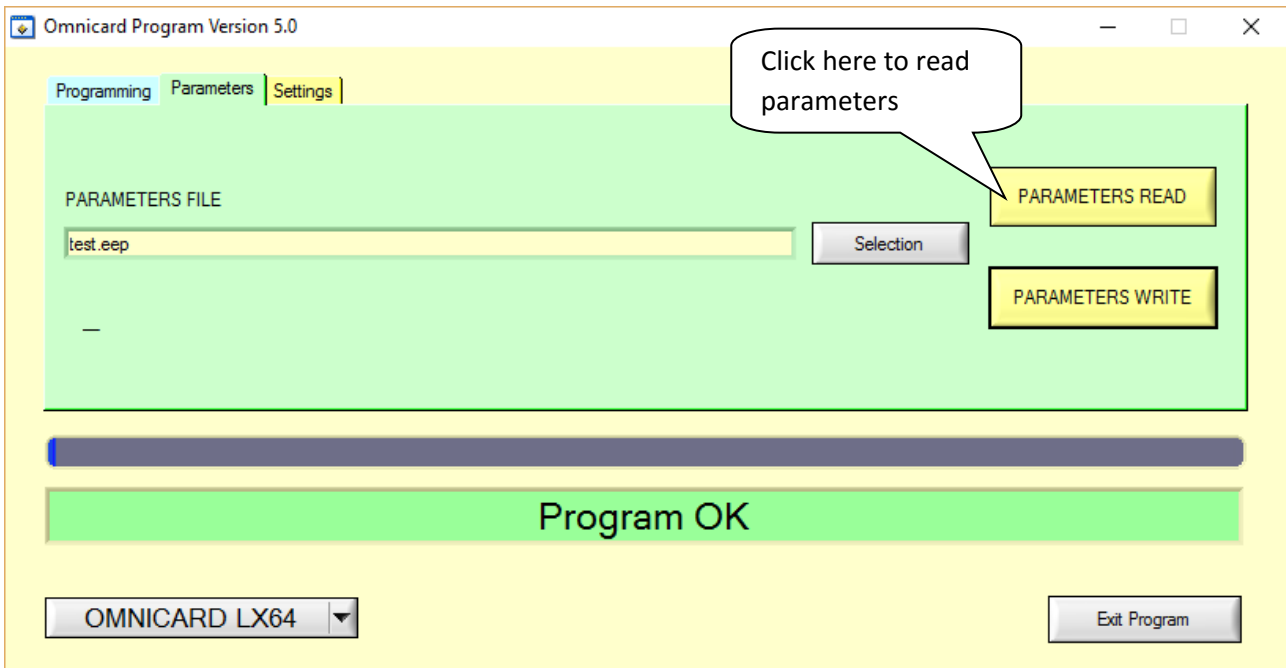




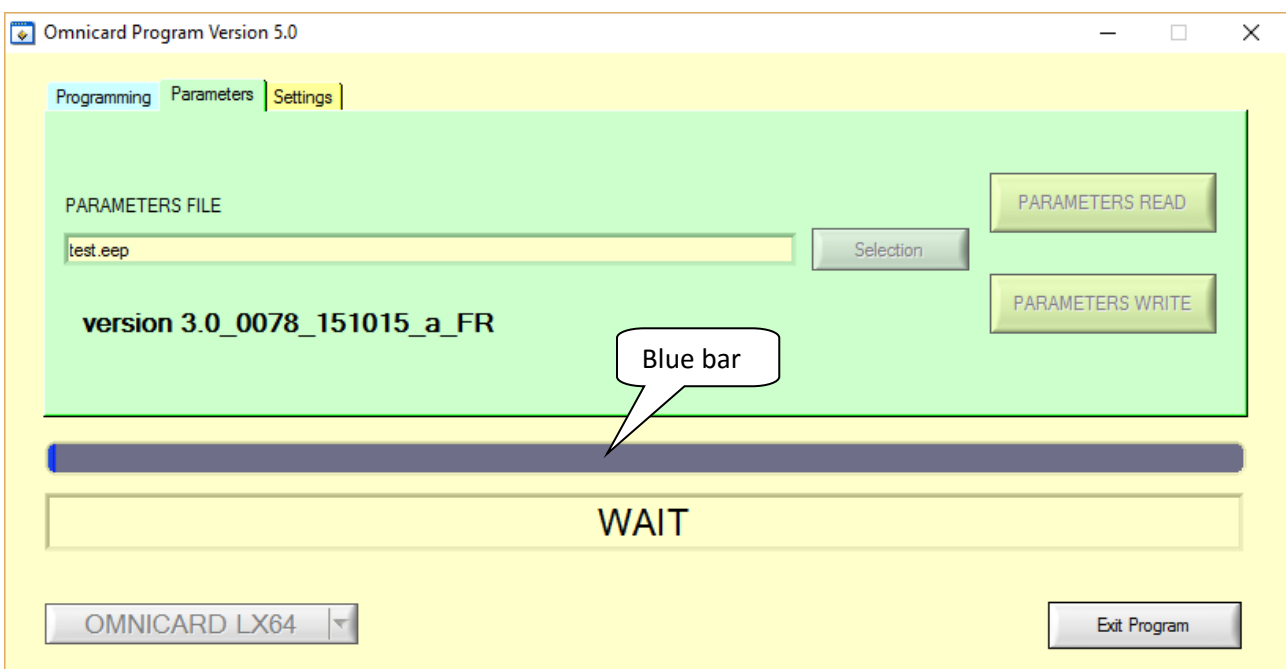
## Instructions for the installation and use of program OMNICARD (rel.5.2)

### - PARAMETERS READING

1. Once you have selected the correct file, click on “PARAMETERS READ”.



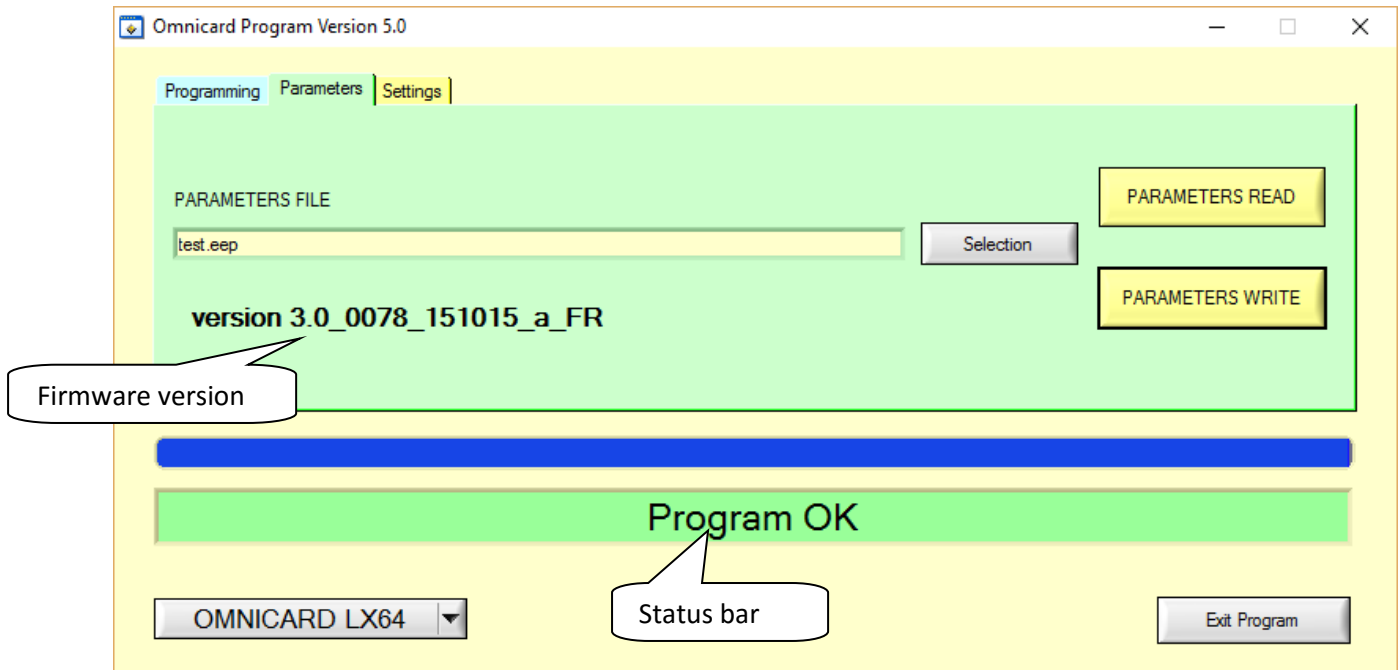
2. Wait a few seconds for parameters reading (see blue bar).





## Instructions for the installation and use of program OMNICARD (rel.5.2)

3. After reading, please note, in the status bar below, text ---OK ---, which indicates the correct reading of parameters. Moreover, we can note the version of the firmware installed.

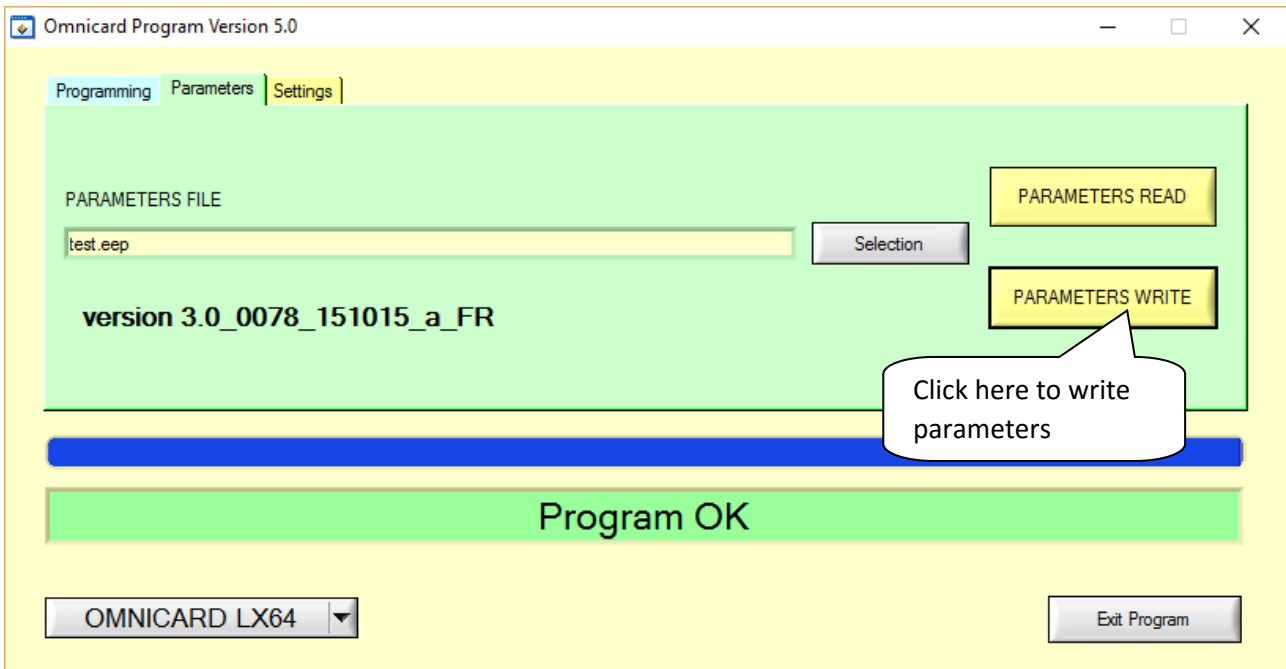




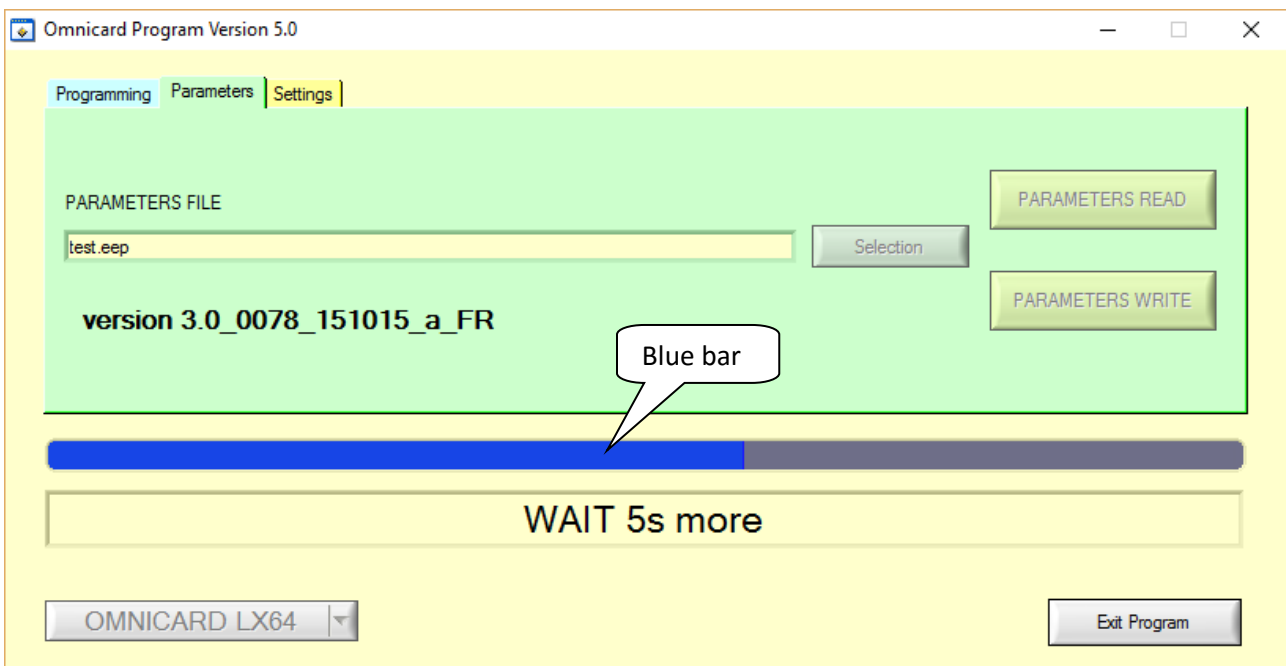
# Instructions for the installation and use of program OMNICARD (rel.5.2)

## - PARAMETERS WRITING

1. After selecting the file with extension type EEP (see section “PARAMETERS FILE SELECTION”), click on “PARAMETERS WRITE”.



2. Wait a few seconds for parameters writing (see blue bar).





## Instructions for the installation and use of program OMNICARD (rel.5.2)

3. After writing, please note, in the status bar below, text --- OK ---, which indicates the correct writing of parameters.

